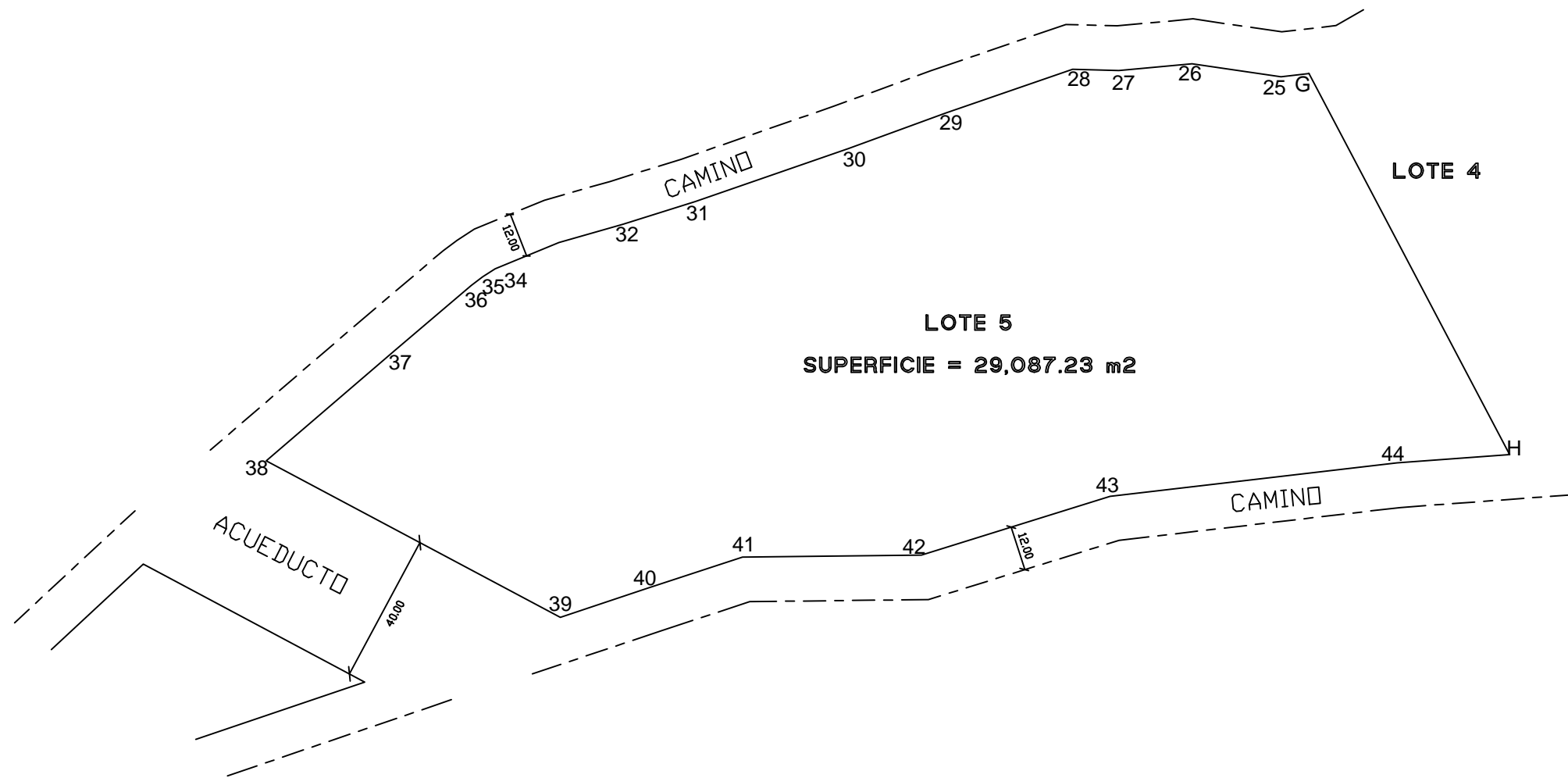
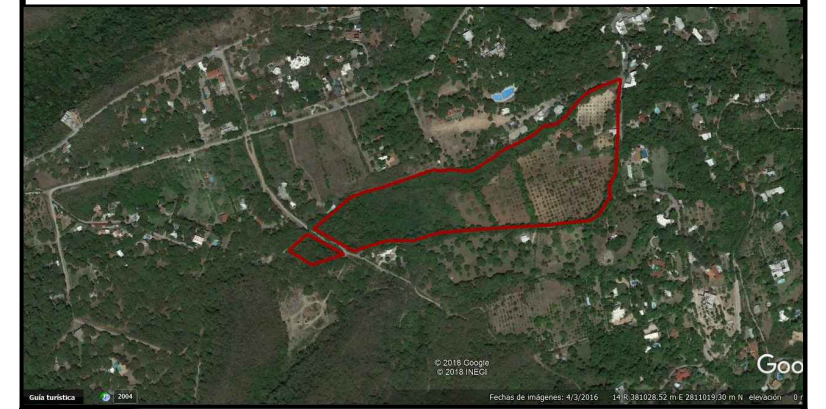




UBICACION S/E



REGISTRO DE POLIGONO SUBDIVISION AFECTACION LOTE 5							
LADO	EST	PV	RUMBO	DISTANCIA	V	COORDENADAS	
						Y	X
					G	2,810,554.59	381,891.17
G		25	S 83°26'41" W	7.61	25	2,810,553.72	381,883.61
25		26	N 81°41'29" W	24.18	26	2,810,557.21	381,859.69
26		27	S 84°43'01" W	19.74	27	2,810,555.40	381,840.03
27		28	N 88°25'03" W	12.38	28	2,810,555.74	381,827.66
28		29	S 71°03'51" W	36.11	29	2,810,544.02	381,793.50
29		30	S 69°58'36" W	27.79	30	2,810,534.51	381,767.39
30		31	S 70°51'37" W	43.58	31	2,810,520.22	381,726.22
31		32	S 72°38'36" W	20.36	32	2,810,514.14	381,706.79
32		33	S 74°03'33" W	17.86	33	2,810,509.24	381,689.62
33		34	S 67°34'20" W	18.53	34	2,810,502.17	381,672.49
34		35	S 57°01'18" W	3.99	35	2,810,500.00	381,669.14
35		36	S 53°20'58" W	3.85	36	2,810,497.70	381,666.05
36		37	S 49°41'17" W	26.99	37	2,810,480.24	381,645.47
37		38	S 49°19'13" W	45.46	38	2,810,450.61	381,611.00
38		39	S 61°58'31" E	89.50	39	2,810,408.56	381,690.00
39		40	N 71°29'49" E	24.56	40	2,810,416.35	381,713.29
40		41	N 71°46'40" E	26.97	41	2,810,424.79	381,738.91
41		42	N 89°22'11" E	48.07	42	2,810,425.32	381,786.98
42		43	N 72°45'40" E	53.12	43	2,810,441.06	381,837.71
43		44	N 83°20'54" E	77.65	44	2,810,450.05	381,914.84
44		H	N 85°46'11" E	30.27	H	2,810,452.28	381,945.02
H		G	N 27°45'49" W	115.61	G	2,810,554.59	381,891.17
SUPERFICIE = 29,087.23 m2							

TOPOGRAFIA	TITULO: PLANO TOPOGRAFICO DE UN TERRENO UBICADO EN: SANTIAGO NUEVO LEON PROPIEDAD DE:		
	LEVANTO Y CALCULO ING. MIGUEL A. PEREZ ZULAICA CED. PROF. 4862273 TEL. 818-252-3030	ESCALA: 1:1,500	FECHA: 19/JULIO/2018
	_____	ACOTACION: METROS	email: arq.miguelperez@hotmail.com
	firma		